

Stunt Scooter ST045, ST046, ST047

Quick Start Guide

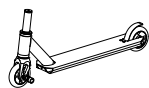


BEFORE OPERATING THIS VEHICLE, PLEASE READ ALL INSTRUCTIONS. This guide will walk you through the functions, usage, and proper care of your SWAGTRON® Stunt Scooter. If you have any questions or cannot find the information you need in this guide, please contact your place of purchase or our customer service at 1-844-299-0625.

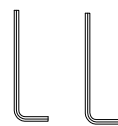
1 Box Contents



Front Assembly x 1



Rear Assembly x 1



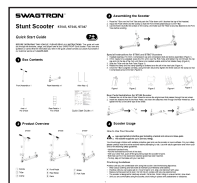
Allen Key x 2



Axle x 1
For ST046



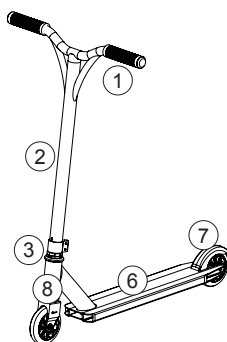
Rear Foot Peg x 1
For ST046



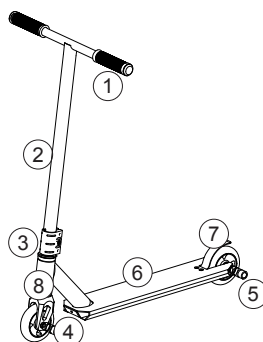
Quick Start Guide x 1

2 Product Overview

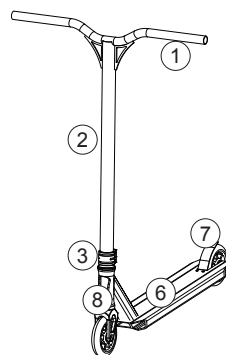
ST045



ST046



ST047



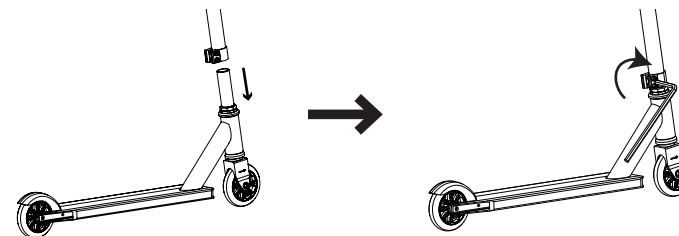
- ① Handle Bars
- ② Stem
- ③ Clamp

- ④ Front Foot Peg
- ⑤ Rear Foot Peg
- ⑥ Deck

- ⑦ Brake
- ⑧ Turning Fork

3 Assembling the Scooter

1. Place the Stem over the Turning Fork and push it down until it connects with the rest of the scooter.
2. Adjust the front wheel and the Clamp so that the Front Wheel is perpendicular to the Stem.
3. Use one of the included Allen Keys to tighten the Clamp's screws. Make sure the Stem is securely attached to the Turning Fork before riding.



Special Instructions for ST046 and ST047 Scooters

1. Headset bearings, HIC shim, compression cap, and compression bolt come pre-assembled (Figure 1).
2. If the HIC needs to be adjusted, place the HIC shim over the Turning Fork and tighten the bolt through the top cap and into the top of the fork until there is no headset wobble and the fork rotates freely (Figure 2).
3. Slide the Stem over the Turning Fork (Figure 3).
4. Rotate the Clamp until its opening is centered over the slit in the Stem (Figure 4).
5. Once the Stem and Clamp are properly aligned, use one of the included Allen Keys to tighten the three bolts on the clamp until it closes around the Stem (Figure 5).



Figure 1

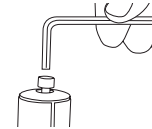


Figure 2



Figure 3



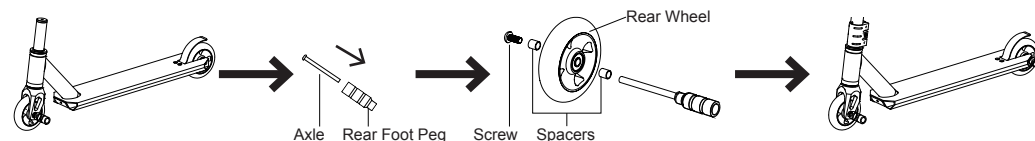
Figure 4



Figure 5

Rear Pedal Installation for ST046 Scooter

1. Unfasten the nut at the side of the rear wheel to remove the original axle that passes through the rear wheel.
2. Insert the Axle through the wheel and use one of the included Allen Keys to tighten the nut on the other side. Look over the illustration carefully to be sure all parts are in the right order.



4 Scooter Usage

How to Use Your Scooter

- ⚠ **Age-appropriate protective gear including an age-appropriate ASTM F1492 approved helmet, elbow pads, knee pads, and wrist guards must be worn at all times.**
- **The scooter supports up to 260 lbs (118kg).**

You should equip children with suitable protective gear and use the scooter on level surfaces. For your safety, please carefully read this entire section before attempting to ride. Use with adult supervision and inform your child of the following safety guidelines.

- Hold both handles firmly.
- Put one foot towards the front of the deck.
- With your other foot, push off the ground to propel the scooter forward.
- Both feet can fit on the deck when the desired speed has been reached.
- To stop, step on the brake with your rear foot.

Practicing Guidelines

Practice until you are comfortable with using the scooter. See the following tips below.

- Wear casual clothing and flat shoes to maintain your flexibility and stability.
- Practice until you can easily get on, move forward, turn, stop, and dismount with ease.
- Make sure the pavement is even. Do not ride on slopes until you are experienced.
- The scooter is designed for relatively smooth, flat terrain. When riding on uneven terrain, slow down.
- Until you are comfortable using the scooter, avoid riding in places with pedestrians or obstacles.

5 Safety Warnings

The SWAGTRON® Stunt Scooters are self-propelled, personal scooters designed for children ages 8 and up. They are not intended or equipped for road use, off-road use, or use with any motorized device. By operating the scooter, the user acknowledges and accepts responsibility of all risks associated with the use of the SWAGTRON® Stunt Scooters which may include, but are not limited to, muscle injuries, broken bones, lacerations, serious injury, and possible death.

- To better ensure your safety, ALWAYS USE APPROPRIATE PROTECTIVE GEAR and read and follow all instructions and warnings in this guide.
- Appropriate protective gear should include an age-appropriate ASTM F1492 approved helmet, elbow pads, knee pads, and wrist guards. Always wear a helmet when riding your scooter and keep the chinstrap securely buckled. Always wear shoes.
- Use with adult supervision.
- Adults must assist children in any initial adjustment procedures.
- Keep fingers away from moving parts to avoid pinching and entrapment.
- Do not modify the scooter or change the scooter in any way not outlined in these instructions.
- The scooter should be used with caution. It requires skill and practice to avoid falls or collisions that may cause injury to the user or other parties.
- Users must be at least 8 years old and weigh no more than 260 lbs.
- Use on flat, clean, and dry surfaces, and keep away from other road users.
- Avoid sharp bumps, drainage grates, and sudden surface changes. Scooter may suddenly stop.
- Avoid streets and surfaces with water, sand, gravel, dirt, leaves, and other debris. Wet weather impairs traction, braking, and visibility.
- Avoid excessive speed associated with downhill rides.
- Never allow more than one person at a time on the scooter.
- Never ride at night, obey all local traffic and scooter riding laws and regulations, and give right of way to pedestrians.
- Brake will get hot from continuous use. Do not touch after braking.
- Never leave your scooter unlocked and unattended.
- Regular maintenance enhances the safety of the equipment.
- Use a few drops of oil to lubricate wheel bearings periodically or as needed.
- Clean bearings after use and replace them when worn.
- Please ensure all screws and fittings are secure before giving the scooter to a child.
- Check and secure all fasteners before every ride. Screws and fixtures may loosen over time.
- Replace any worn or broken parts immediately.
- Use at your own risk. We are not responsible for accidents due to product misuse.

6 Warranty Information

Your SWAGTRON® Stunt Scooter (“Product”) includes a One Year Limited Hardware Warranty (“Warranty”). The Warranty covers product defects in materials and workmanship under normal use. This Warranty is limited to residents of the United States and Canada only and is available only to original purchasers. This Warranty gives you specific legal rights and you may also have other rights which vary from state to state.

This Warranty starts on the date of your purchase and lasts for one year (the “Warranty Period”). The Warranty Period is not extended if the Product is repaired or replaced. We may change the availability of this limited warranty at our discretion, but any changes will not be retroactive. Warranty services are provided by SWAGTRON®. If a hardware defect arises and a valid claim is received within the Warranty Period, at its option and to the extent permitted by law, SWAGTRON® will: (1) repair the hardware defect by using new or refurbished parts that are equivalent to new in performance and reliability; or (2) exchange the Product with a product that is new or refurbished which is substantially equivalent to the original product. This Warranty is for one replacement only of like-items and does not cover items out of production if the product is no longer made or stocked. This Warranty is not assignable or transferable. The original purchaser may call SWAGTRON’s toll-free number at 1-844-299-0625 for service requests.

When a product or part is exchanged, any replacement item becomes your property and the replaced item becomes SWAGTRON’s® property. This warranty only covers technical hardware defectiveness during the warranty period and under normal use conditions. SWAGTRON® does not warrant uninterrupted or error-free operation of this Product.

This Warranty does not cover any damage due to: (a) transportation; (b) storage; (c) improper use; (d) failure to follow the product instructions or to perform any preventive maintenance; (e) modifications; (f) unauthorized repair; (g) normal wear and tear; or (h) external causes such as accidents, abuse, or other actions or events beyond our reasonable control.

Important: Do not disassemble the Product. Disassembling the Product will void this Warranty. Only SWAGTRON® or a party expressly authorized by SWAGTRON® should perform service on this Product.

DISCLAIMER OF WARRANTY: THE REMEDIES DESCRIBED ABOVE ARE YOUR SOLE AND EXCLUSIVE REMEDIES AND OUR ENTIRE LIABILITY FOR ANY BREACH OF THIS LIMITED WARRANTY. OUR LIABILITY SHALL UNDER NO CIRCUMSTANCES EXCEED THE ACTUAL AMOUNT PAID BY YOU FOR THE DEFECTIVE PRODUCT, NOR SHALL WE UNDER ANY CIRCUMSTANCES BE LIABLE FOR ANY CONSEQUENTIAL, INCIDENTAL, SPECIAL OR PUNITIVE DAMAGES OR LOSSES, WHETHER DIRECT OR INDIRECT.

SOME STATES DO NOT ALLOW THE EXCLUSION OR LIMITATION OF INCIDENTAL OR CONSEQUENTIAL DAMAGES, SO THE ABOVE LIMITATION OR EXCLUSION MAY NOT APPLY TO YOU.

THE DURATION AND REMEDIES OF ALL IMPLIED WARRANTIES, INCLUDING WITHOUT LIMITATION THE WARRANTIES OF MERCHANTABILITY AND FITNESS FOR A PARTICULAR PURPOSE ARE LIMITED TO THE DURATION OF THIS EXPRESS LIMITED WARRANTY.

7 Specifications

Model	Item	Parameters
ST045	Stem	Steel Tube
	Compression System	N/A
	Turning Fork	Steel
	Brake	Steel
	Clamp	Double
	Wheels	3.9 in (10cm) PU Wheel + Polycarbonate Core
	Bearings	ABEC-7
	Grip Material	TPE
	Maximum Load	260 lbs (118kg)
	Certifications	ASTM F2264
	Ages	8+
	Scooter Dimensions	27.4 x 18 x 31.3 in (69.5 x 46 x 79.5 cm)
	Deck Dimensions	19.5 x 4 in (49.6 x 10.2 cm)
	Deck Material	Aluminum Alloy
Weight	7.4 lbs (3.3 kg)	
ST046	Stem	Steel Tube
	Compression System	HIC System
	Turning Fork	Forged aluminum alloy
	Brake	Flexible Steel
	Clamp	Triangle
	Wheels	3.9 in (10cm) PU Wheel + Aluminum Core & Pegs
	Bearings	ABEC-9
	Grip Material	TPE
	Maximum Load	260 lbs (118kg)
	Certifications	ASTM F2264
	Ages	8+
	Scooter Dimensions	27.4 x 17.8 x 31.5 in (69.5 x 45.2 x 80 cm)
	Deck Dimensions	19.7 x 4 in (50 x 10.2 cm)
	Deck Material	Aluminum Alloy
Weight	8.2 lbs (3.7 kg)	
ST047	Stem	Chrome Steel Tube
	Compression System	HIC System
	Turning Fork	Forged + CNC aluminum alloy
	Brake	Flexible Steel
	Clamp	CNC Double
	Wheels	4.3 in (11cm) PU Wheel + Aluminum Core
	Bearings	ABEC-9 NSK 608ZZ
	Grip Material	TPE
	Maximum Load	260 lbs (118kg)
	Certifications	ASTM F2264
	Ages	8+
	Scooter Dimensions	28.2 x 23 x 35.4 in (71.5 x 58.5 x 90 cm)
	Deck Dimensions	20.5 x 4.3 in (52 x 11 cm)
	Deck Material	Aluminum Alloy
Weight	8.6 lbs (3.9 kg)	